

**Species now recorded from VCs 91-93:** *Stigmella myrtillella* Stt.; *S. luteella* Stt.; *S. alnetella* Stt.; *Incurvaria oehlmanniella* Hb.; *Lampronia rubiella* Bjerk.; *Nematopogon swammerdamella* L.; *Yponomeuta padella* L.; *Coleophora discordella* Zell.; *Borkhausenia fuscescens* Haw.; *Semioscopis avellanella* Hb.; *Teleiopsis diffinis* Haw.; *Bryotropha galbanella* Zell.; *Blastobasis lignea* Wals.; *Aethes smeathmanniana* F.; *Aphelia viburnana* D.& S.; *Philedone gerningana* D.& S.; *Hedya atropunctana* Zett.; *Aphomia sociella* L.

## Correction

*Epiblema tetragonana* Steph. A record of this species from Elfhill VC 91 is an error; the correct identification of this moth is at present uncertain.

## References

- Barbour, D.A., 1976. Macrolepidoptera of Banffshire. *Entomologist's Rec. J. Var.* **88**: 1-11.  
Leverton, R., 1993. The macrolepidoptera of Banffshire: a supplement. *Entomologist's Rec. J. Var.* **105**: 97-104.  
Palmer, R.M. & Young, M.R., 1994. Lepidoptera of Aberdeenshire and Kincardineshire: 7th Appendix. *Entomologist's Rec. J. Var.* **106**: 85-89.  
Reid, W., 1893., *List of the Lepidoptera of Aberdeenshire and Kincardineshire*  
Trail, J.W.H., 1878. Lepidoptera of Deeside. *Trans. Nat. Hist. Soc. Aberdeen.* 28-42.  
Young, M.R., 1995. An American moth in Aberdeen. *Entomologist's Rec. J. Var.* **107**: 198-199.

---

---

## Correction to list of Greek butterflies

On 25 July 1992, a male Lycaenid butterfly was caught at 1650 metres on the Xérocamos Plateau of Mount Chelmos (Wakeham-Dawson, 1997. Some notable butterfly records from Greece in 1992 and 1995. *Ent. Rec.* **109**: 199-203). As it is very similar to specimens of *Polyommatus eros* Ochsenheimer that fly in the Central Pyrenees, it was tentatively classified as *P. eros menelaos* Brown (the subspecies of *eros* that flies in Greece). However, *menelaos* is a bright sky blue butterfly that is only known from the Taygetos mountains. Many authors consider it to be sufficiently different from *eros* to justify giving it specific status (eg. Carbonell, 1994. Contribution à la connaissance du genre *Polyommatus* Latreille, 1804: le complex ultraspécific de *Polyommatus eros-eroides* au Moyen-Orient et en Transcaucasie (Lepidoptera: Lycaenidae) (2ème partie: diagnose et discussion). *Linn. Belg.* **14**: 439-454).

Examination of the genitalia (Fig. 1) of the specimen from Mount Chelmos suggests that it is most probably a dwarf example of *Lysandra coridon graeca* Rühl-Heyne, with a much reduced black submarginal border that makes the wings appear more blue than usual in this species, and worn underside markings that superficially appear more similar to genus *Polyommatus* than to genus *Lysandra*. Therefore the record of *eros* from Mount Chelmos is incorrect.

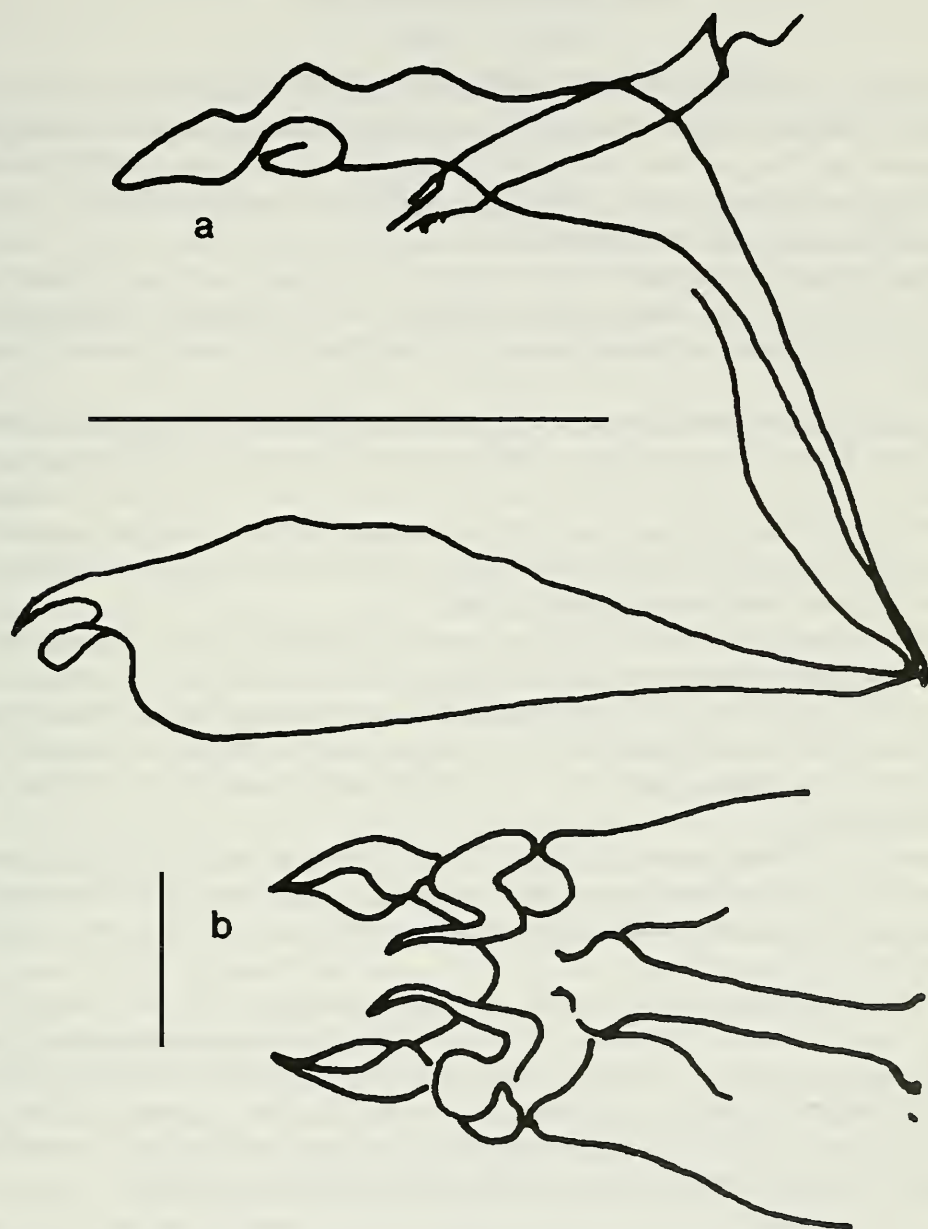


Fig. 1. Genitalia of probable male *Lysandra coridon graeca* from Mount Chelmos, southern Greece:

(a) Lateral view of valve, dorsal process and aedeagus (scale bar represents 1mm);

(b) posterior-anterior view of labides, falces and aedeagus (scale bar represents 0.5mm).

I thank Horst Arheilger and Jos Dils for helpful discussion about *eros* in Greece and possible identification of the specimen from Mount Chelmos.— ANDREW WAKEHAM-DAWSON, Mill Laine Farm, Offham, Lewes, East Sussex BN7 3QB.